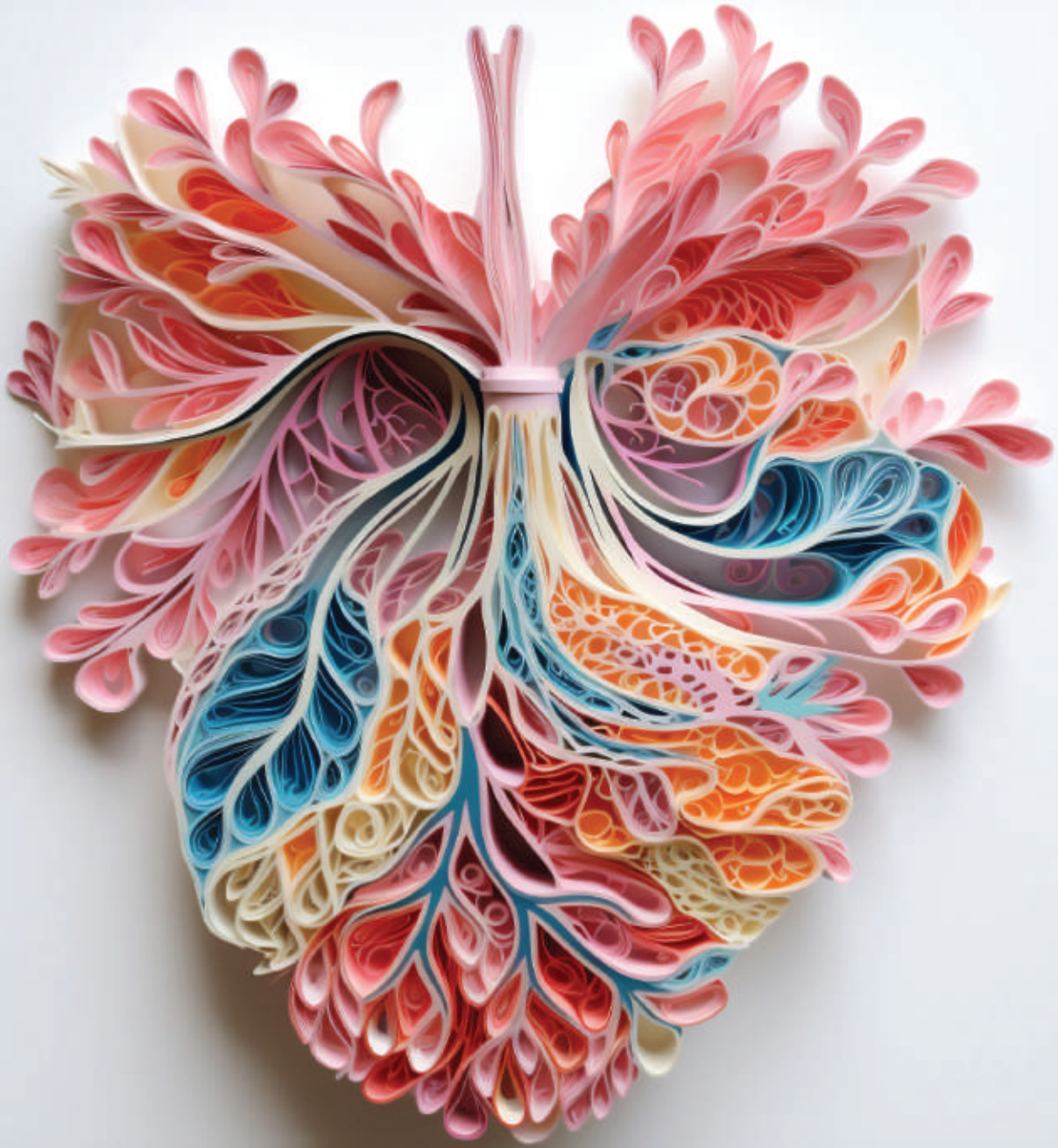


S O U J A N Y A
L I F E S C I E N C E S



Powering Life Changing Medicines

S O U J A N Y A

L I F E S C I E N C E S

POWERING LIFE CHANGING MEDICINES

We Soujanya Lifesciences, a division of the revered Soujanya Group, seamlessly combine our parent company's legacy into Specialty Chemicals with fresh dynamism. We specialize in sustainable, efficient manufacturing of Active Pharmaceutical Ingredients, Advanced Intermediates and Excipients. Based in Mumbai - Maharashtra, with R&D prowess and cutting-edge manufacturing, we aim to be your most trusted and efficient partner for developing and providing best-in-class raw materials and ingredients in the life sciences field.

ABOUT US

A GLOBAL LEADER IN INNOVATIVE & SUSTAINABLE SPECIALTY CHEMICALS

For over 40 years Soujanya Group has been at the forefront of innovations in Specialty Chemical manufacturing with a global presence in over 50 countries, and a team of experts focused on 13 different industries.

We operate Asia's largest advanced manufacturing facility for liquid colors, which has been our legacy business. We leverage our expertise in operational excellence, supply chain efficiency, process optimisation, innovation and sustainability to develop solutions that touch many lives every day.

Finding Beauty in Complex Chemistry

- Chiral Chemistry
- Reduction
- Hydrogenation (Catalytic reduction)
- Grignard Reaction

CMO/CDMO

We undertake CMO & CDMO services, optimize scientific innovation and manufacturing technology to enable our customers to serve their business and consumers.

R&D & Manufacturing

Soujanya Life Sciences is dedicated to research and development, aiming to provide innovative molecules to the healthcare industry. Their state-of-the-art R&D Kilo lab facilities in Navi Mumbai and Pune, along with their team's expertise in handling complex chemistry processes and translates technologies to commercial scale at two manufacturing plants in Mumbai and Mahad.



Active Pharmaceutical Ingredients

Product name	Pharmacopiea	CAS no.	Therapeutic category
Teneligliptin HBR Hydrate	IP & IH	906093-29-6	Anti- Diabetic
Linagliptin	IH	33818-15-4	Anti- Diabetic
Ticagrelor	IP & IH	274693-27-5	Anti- Coagulant
Benfotiamine	IH(Anhydrous Form)	22457-89-2	Neutraceutical
Venlafaxine Hcl	IP/BP/USP	99300-78-4	Anti-depressant
Paracetamol	IP/IH	103-90-2	Anti-Inflammatory
Metformine	IP/EP	1115-70-4	Anti- Diabetic
Products Under Development			
Dapagliflozin Propanediol Monohydrate	IH	960404-48-2	Anti- Diabetic
Empagliflozin	IH	134523-00-5	Anti- Diabetic
Rivaroxaban	IH/IP/USP/BP	366789-02-8	Anti- Coagulant
Rosuvastatin Calcium	IP/BP/EP/USP	366789-02-8	Cardiovascular
Edoxaban Tosylate Monohydrate	IH	1229194-11-9	Anti- Coagulant
Ivabradin Hcl	IH	148849-67-6	Cardiovascular
Dorzolamide	IP/BP/EP/USP	120279-96-1	Ophthalmic
Tropicamide	IP/BP/EP/USP	1508-75-4	Ophthalmic
Olopatadine	IP/BP/EP/USP	140462-76-6	Ophthalmic
Timolol Malate	IP/BP/EP/USP	26921-17-5	Ophthalmic

List of Intermediate

Intermediate Name	Final API	CAS no.
Isopropyl myristate	Emollient	110-27-0
2R 3R 4R 5S 6S 2 Acetoxymethyl 6 4 Chloro 3 4 Ethoxybenzyl Phenyl Tetrahydro 2H Pyran 3 4 5 Triyl Triacetate	Dapagliflozin	461432-25-7
5-Bromo-2-Chloro-4-Ethoxydiphenylmethane	Dapagliflozin	461432-23-5
R 3 Boc Amino Piperidine R + 3 Tert Butoxycarbonylamino piperidine	Linagliptin	309956-78-3
(S)-(-)-3-Hydroxy tetrahydrofuran	Empagliflozin	86087-24-3
(S)-3-(4-(2-CHLORO-5-IODOBENZYL)PHENOXY) TETRAHYDROFURAN	Empagliflozin	915095-94-2
(2S)-4-Oxo-2-(3-thiazolidinylcarbonyl)-1-pyrrolidinocarboxylic Acid 1,1-Dimethylethyl Ester	Teneligliptin HBR Hydrate	401564-36-1
1-(3-Methyl -1-phenyl-5-pyrazolyl)piperazine	Teneligliptin HBR Hydrate	401566-79-8
4,6-dichloro-2-(propylthio)-5-pyrimidinamine, 4,6-dichloro-2-propylthiopyrimidine -5-amine	Ticagrelor	145783-15-9
Para Amino Phenol	Paracetamol	204-616-2

S O U J A N Y A

LIFESCIENCES

(A Division of Soujanya Color Pvt Ltd)

Godrej Two, 204 A, second floor, Eastern Express Highway,
Pirojshanagar, Vikhroli, Mumbai, Maharashtra, India - 400079

Contact : +91 6972 1234